

Peter Meyer

Ball valves

Top entry segment ball valves



Features

- Swiss manufacturer
- Top entry design (valve can be opened from the top)
- Access to the interior parts without removing the valve from the pipeline
- Laser welded, one-piece body construction
- Eccentrically mounted shaft
- One-piece segment/stem construction
- No cavity
- Seat in the segment
- Full bore
- Anti blow-out stem
- Antistatic
- Smart construction shape, minimum weight and good accessibility
- All valves comply to PED 97/23/EC
- ATEX certification acc. to directive 94/9/EC
- All valves are in compliance with TA-Luft
- FDA approved
- Bidirectional tight acc. to EN 12266-1, rate A

Technical data

Nennweiten:	DN 25 – DN 65
Pressure class:	PN 10 – PN 40 or ANSI Class 150/300 lbs
Temperature range:	-60°C up to +225°C
Connections:	Flanges acc. to EN 1092-1 Butt welding ends acc. to EN 12627
Face-to-face:	Flanged in acc. to EN 558 and ANSI B16.10 Butt welding ends in acc. to EN 12982 R1
Top flange:	In acc. to DIN EN ISO 5211:2001

Options

- Stem extension (special length available)
- Double gland packing with monitoring port
- Flushing bore
- Different connections and face-to-faces are available on request

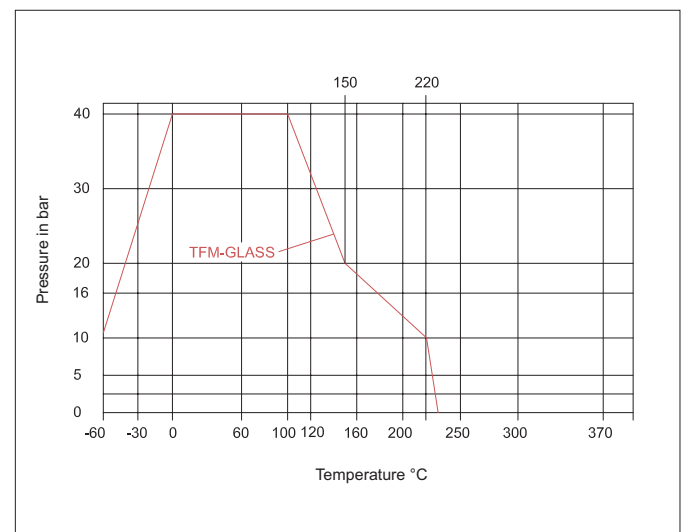
General applications

Especially suitable for chemical, pharmaceutical and food industry in multi-purpose plants where fast and good cleaning is required.



Pressure and Temperature Ratings

For the seats



Depending on size and pressure rating

Top entry segment ball valves

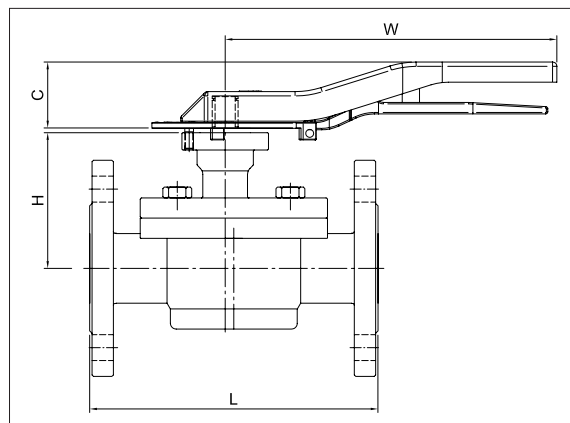
Dimensions and weight

With flanges and wrench with locking plate

DN	FD* Ø mm	PN	L acc. to EN 558/R1	H	W	C	ISO 5211	Weight (kg)
25	29	40	160	74	230	46	F04	4.5
40	43	40	200	94	270	55	F05	8.4
50	55	40	230	102	270	55	F05	12.4
65	68	16/40	290	158	325	55	F07	17

*FD = free passage

Dimensions in mm



Flanges acc. to EN 1092-1 Form B1

With welded ends

DN	FD* Ø mm	PN	A	ØB	ØC	ISO 5211	Weight (kg)
25	29	40	160	33.7	29.7	F04	2.5
40	43	40	200	48.3	44.3	F05	4.9
50	55	40	230	60.3	56.3	F05	7.5
65	68	16/40	290	76.1	71.5	F07	11

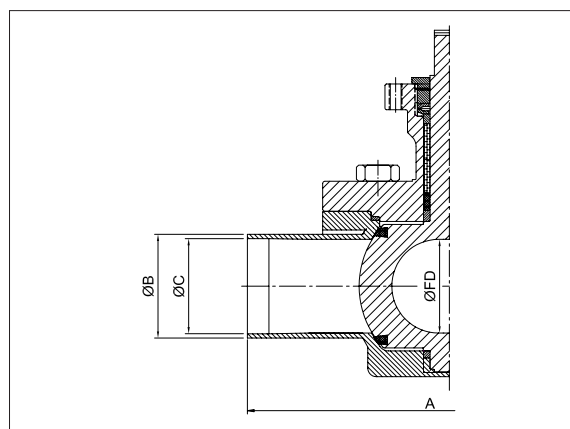
*FD = free passage

Dimensions in mm

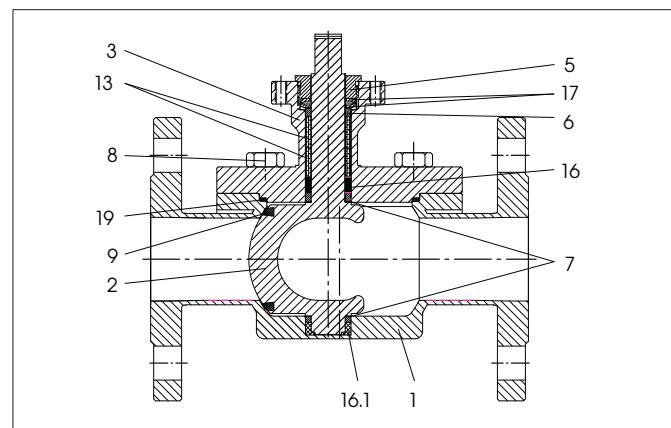
Face-to face dimensions acc. to EN 12982 R1

Butt welding ends acc. to EN 12627

Other dimensions on request



Parts list



Item	Description	Material	Quantity
1	Body	1.4404	1
2	Segment with stem	1.4404	1
3	Gland with housing cover	1.4404	1
5	Gland cover	1.4305	1
6	Thrust ring	1.4305	1
7	Packing	TFM-Glas	2
8	Hexagon screw	A2	4
9	Segment seat	TFM-Glas	1
13	Stem packing	Divers	1
16	Bearing bush kit	PEEK	1
16.1	Counter bearing bush	PEEK	1
17	Spring washer	1.4310	2
19	Body seal	Gylon	1

Product advantages

- No spare parts inside the body
- No dead space and self-draining body
- Easy and quick cleaning of the piping and interior parts without removal of the valve
- Easy and quick replacement of the wear parts
- Surface roughness inside $Ra < 1.3 \mu m$ as standard
- Optional up to $Ra < 0.5 \mu m$

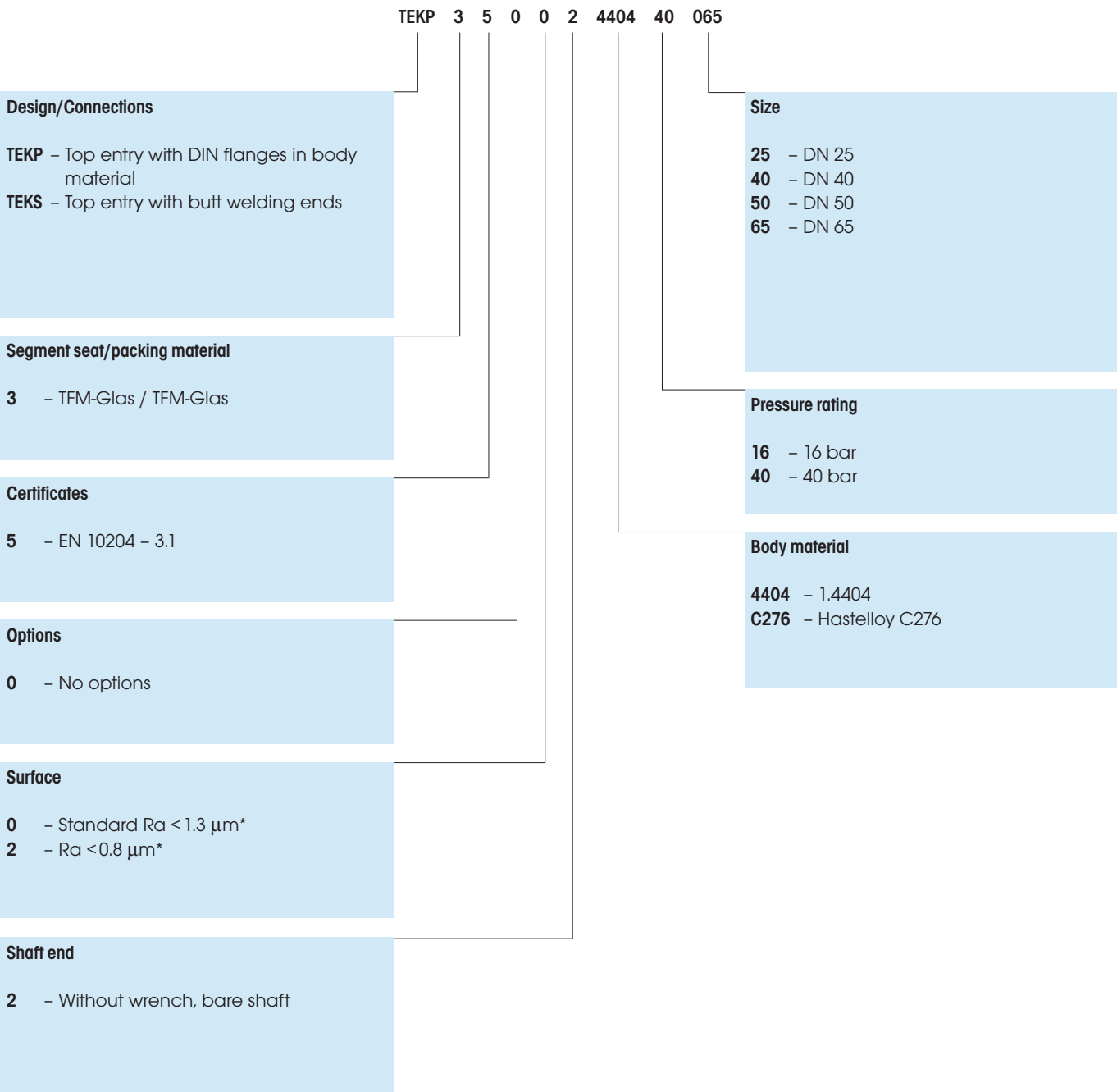


Construction of the body and interior parts



Subject to alterations

Product coding



* Bore + dead space

AVI-PMTEK / CH00-03.15-EN

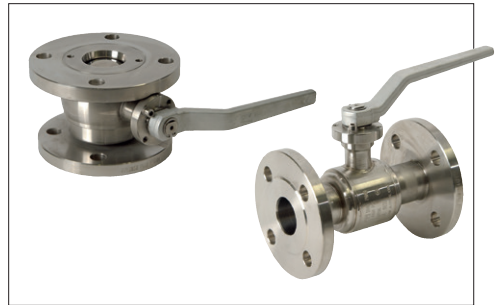


Other Products from Peter Meyer & Co. AG



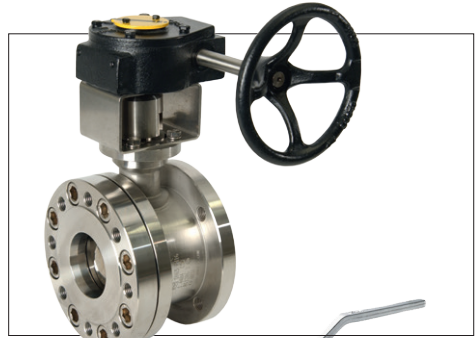
Standard- and Tank Bottom Valves

- One-piece body design
- Full bore
- Laser welded, without body seal
- Chambered seats
- Integrated cavity pressure relief system



Segment Ball Valves

- Eccentric mounted shaft
- 2 piece design
- Full bore
- Seats in Metal, PEEK or TFM
- Suitable for resinous media such as adhesives and colorants, products with catalyst, and so on



Cryogenic Ball Valves

- One-piece body design
- Laser welded, without body seal
- Chambered seats
- Integrated cavity pressure relief system
- Suitable for very cold media in cryogenic process installations



Metal Seated Ball Valves

- One-piece or split body design
- Seats and ball surface coated
- Suitable for high temperature range, for abrasive, erosive and other wide range of applications



Ball Valves for Solids

- Trunnion mounted design
- Only one seat with pre-loaded spring element
- Full ball or segment
- Seat in metal, PEEK or TFM
- Suitable for dry and abrasive solids, such as powders, ash, and so on

