

OPTIBRIDGE 1210

USB interface adapter for HART®-devices



Installation, assembly, start-up and maintenance may only be performed by appropriately trained personnel. Check the nameplate for correct operating conditions.



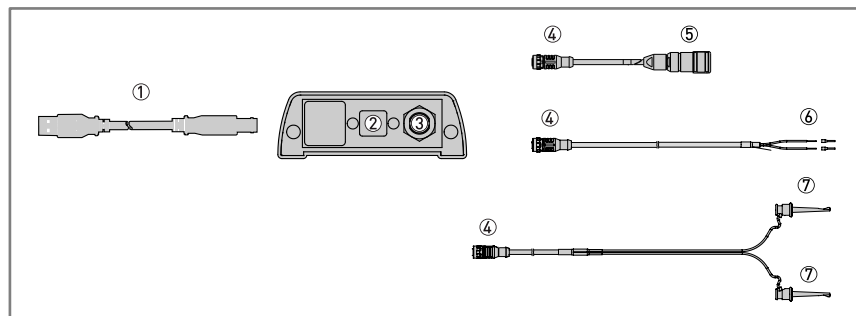
The responsibility as to the suitability, intended use and corrosion resistance of the used materials against the measured fluid of this device rests solely with the operator.

1 Installation



Information:

Intended use - the OPTIBRIDGE 1210 is a mobile USB interface adapter for measurements, commissioning, parameterisation, maintenance and calibration of 2-wire and 4-wire HART® devices.



- ① USB 2.0 connection cable with USB A plug to USB B plug
- ② OPTIBRIDGE 1210, USB B socket
- ③ OPTIBRIDGE 1210, M12 socket
- ④ M12 cable connector
- ⑤ VP cable socket
- ⑥ Stranded wires with ferrules
- ⑦ Minigrabber®

Adapter cable M12-VP for OPTIBRIDGE 1210 with M12 cable connector ④ und VP cable socket ⑤ for sensors with VP2-connector (optional).

Adapter cable M12-strands for OPTIBRIDGE 1210 with M12 cable connector ④ and strands with ferrules ⑥ (optional).

Adapter cable M12-Minigrabber® for OPTIBRIDGE 1210 - M12 cable connector ④ and Minigrabber® ⑦ (optional).



Warning:

All connection cables (any M12 adapter cable and the USB cable) must not be extended or shortened. Only use the optional adapter cables from KROHNE intended for the device.

DTM software installation procedure

- Log in as administrator.
- Start installation of PACTware™. It is recommended to install the ICS Generic HART® DTM and HART® Communication FDT in order to use generic HART® devices for communication with PACTware™.
- Start installation of OPTIBRIDGE 1210 device DTM.
- The software is installed in the default program directory of your computer under subdirectory \KROHNE\OPTIBRIDGE1210DTM.

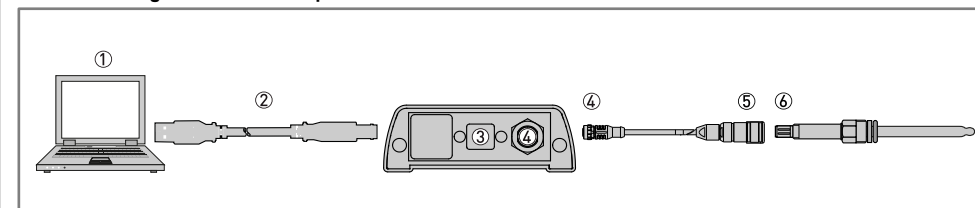
2 Electrical connection



Danger:

All work on the electrical connections may only be carried out with the power disconnected. Take note of the voltage data on the nameplate. Observe the national regulations for electrical installations.

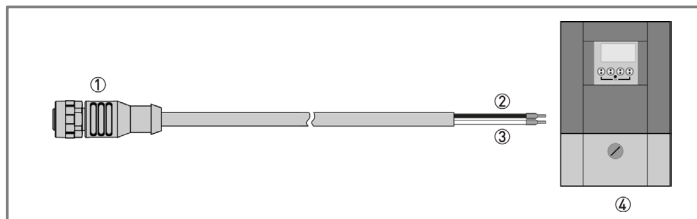
Connection diagram with VP2 adapter cable



- ① PC / notebook with PACTware™ FDT/DTM
- ② USB 2.0 connection cable with USB A plug to USB B plug
- ③ USB B socket
- ④ M12 cable socket and cable connector
- ⑤ VP cable socket
- ⑥ VP connector

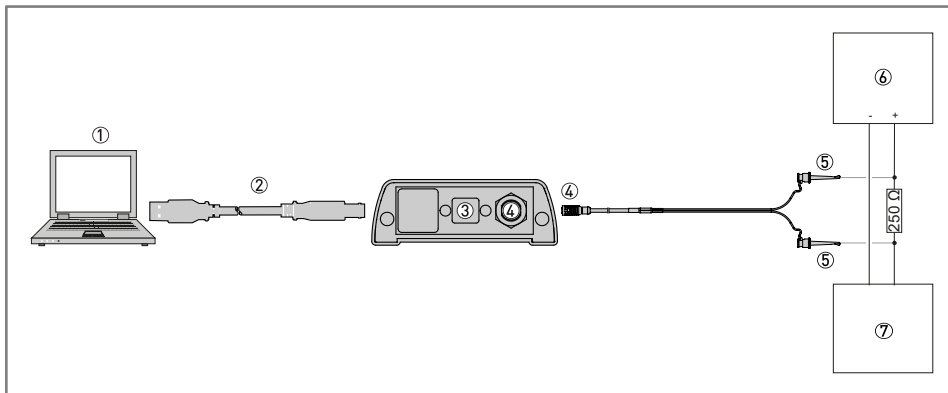
- Select the adapter cable suitable for your device.
- Plug in the USB A connector ② into the USB port of the PC / notebook ①.
- Plug in the USB B connector ② into the USB B port of the OPTIBRIDGE 1210 ③.
- Connect the M12 socket on the OPTIBRIDGE 1210 ④ to the M12 cable connector ④ and tighten it by hand (max. 5 Nm).
- Screw the VP cable socket ⑤ on the VP connector ⑥ and tighten it by hand (max. 5 Nm).

Connection diagram for any HART® devices with passive 4-20mA interface



- ① M12 cable connector
- ② Blue: U-
- ③ White: U+
- ④ HART®-capable field device with passive 4-20mA interface (e.g. IFC 300)

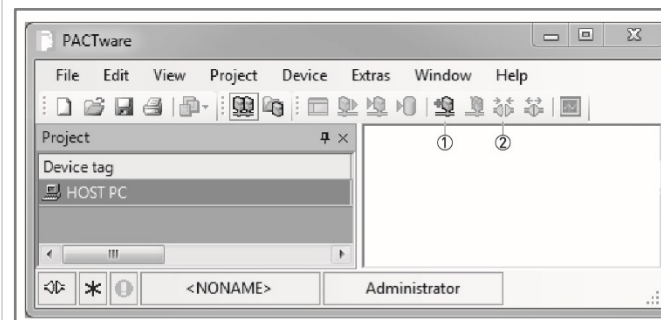
Connection diagram for operation as a HART® modem



- ① PC / notebook with PACTware™ FDT/DTM
- ② USB 2.0 connection cable with USB A plug to USB B plug
- ③ USB B socket
- ④ M12 cable socket and cable connector
- ⑤ Minigrabber®
- ⑥ Power supply
- ⑦ HART® field device

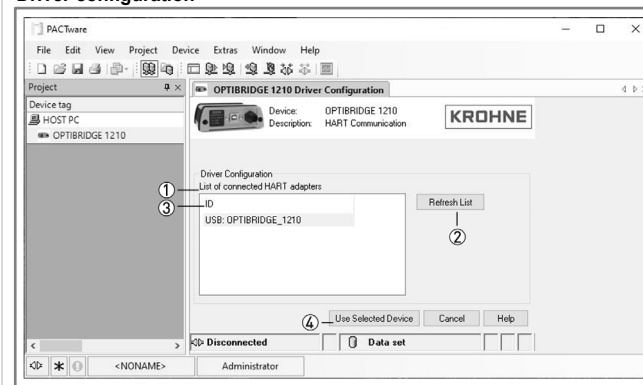
3 Quick Setup

Operating the device with PACTware™



- Open PACTware™
- Add device ①
- Connect device ②

Driver configuration



- ① List of connected HART® adapters.
- ② Refresh List of connected HART® adapters.
- ③ ID (Init Device) - The selected device is initialised.
- ④ Use Selected Device - This button closes the dialog. The selected device is used for communication.

Download documents and software

Scan the code on the nameplate or scan the following code and enter the serial number.



Contact

Select your country from the region / language selector to view your local KROHNE contact details on:

www.krohne.com